



## 1 Features of EZCAB

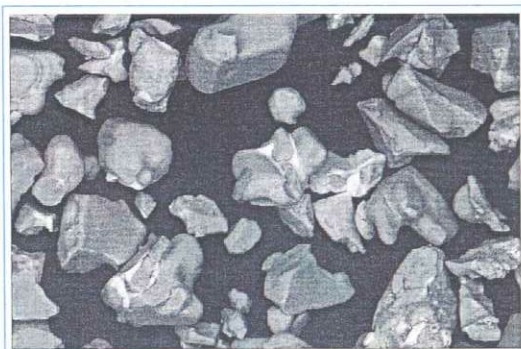
1. Achieved as 1.2 ~1.5 time brighter compared with our conventional type "EZCB"
2. Adjusted max particle size in order to make the molding process go well
3. changed surface of pigments more round in order to reduce the machine abrasion
4. Applicable to applications for outdoor use because of improved water and weather fastness

## 2 Characteristics

Item	Characteristics	Remarks
Body color	White~Light Yellow	—
Emission color	Blue green	Peak wavelength 490nm
Afterglow characteristics	Visible (for more than 12 hour after shutdown of light source)	depending on setting conditions
Specific gravity	3.6	JIS K 5101
Solvent resistance	No change on luminescent performance	leave for 5 hours in liquid ethanol
Chemical resistance	No change on luminescent performance	leave for 5 hours in 5% HCL aqueous solution
Heat resistance	No change on luminescent performance	600°C

Above performance may vary when mixed with other substances.

## 3 Photograph by Electron Microscope (×1,000)



< New Type EZCAB 15-E >



< Conventional Type EZCB 15-E >



30-55, Kiyotakinaka-Machi, Shijounawate-City, Osaka, 575-0061, Japan

Tel: +81 (0) 72 803 5531 Fax: + 81 (0) 72 803 5532

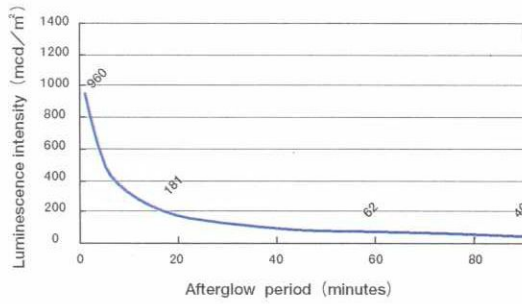
URL: [http:// www.ez-bright.co.jp/](http://www.ez-bright.co.jp/)



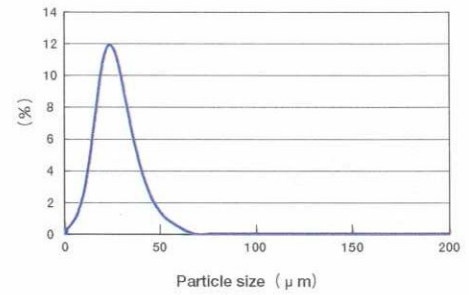
# Photoluminescence Pigment Blue Green Type

Code : EZCAB (15, 25, 50, 100)

Item No. EZCAB 15-E  
D<sub>50</sub> 15 ± 3 μ  
Usage : Ink, Paint, Plastic, Film etc

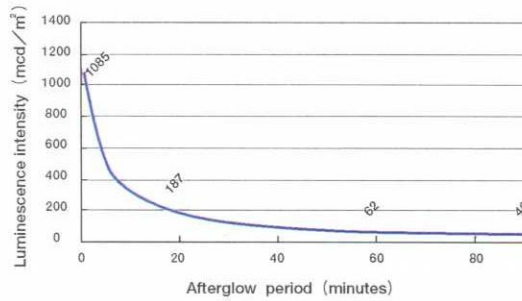


Afterglow luminance curve

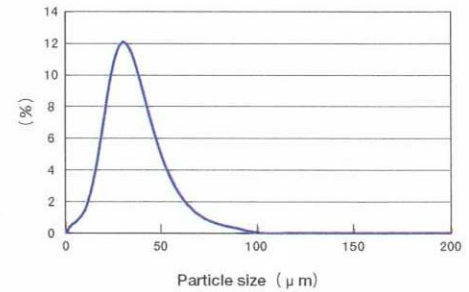


Particle size distribution curve

Item No. EZCAB 25-E  
D<sub>50</sub> 25 ± 3 μ  
Usage : Ink, Paint, Plastic, Sheet etc

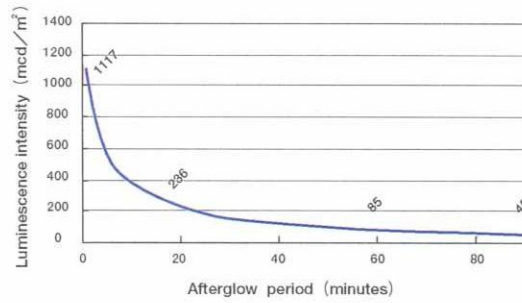


Afterglow luminance curve

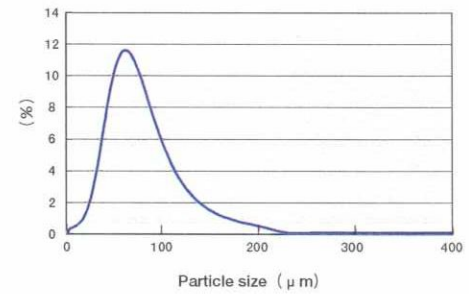


Particle size distribution curve

Item No. EZCAB 50-E  
D<sub>50</sub> 50 ± 10 μ  
Usage : Paint, Cast etc

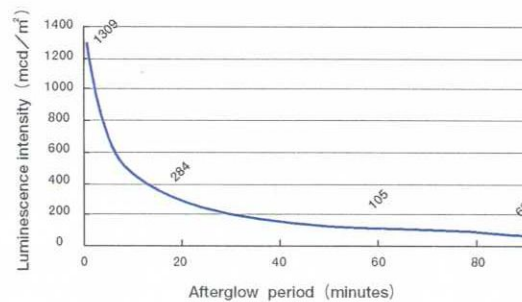


Afterglow luminance curve

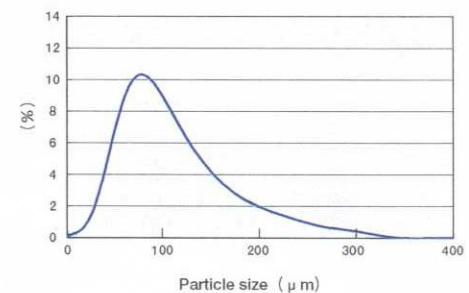


Particle size distribution curve

Item No. EZCAB 100-E  
D<sub>50</sub> 100 ± 25 μ  
Usage : Paint, Building material etc



Afterglow luminance curve



Particle size distribution curve

### Measuring conditions

Exposing to D65 type of light source (200Lx) after keeping in the dark for 24 hours  
Temperature 25°C Humidity 60% Exposure time 20 (min) Measuring distance 20cm Measuring angle 90  
Instrument machine : LS-100 by Konica-Minolta

※ These are measured figure at our laboratory and are for reference only.